

STANDARDS & SPECS

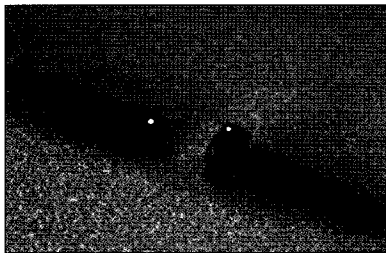
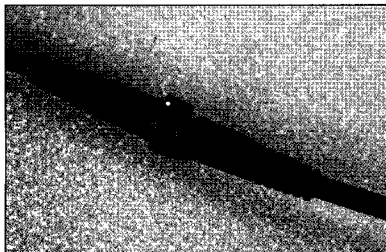
- Design Objectives: 108-2080
- Spring Probe Product Specification: 108-1943

MATERIALS

- Spring Probe Pin: Brass, 10 μin [.25 μm] gold finish over nickel on mating end, tin-lead over nickel on solder cup/solder tail
- Spring Probe Pad: Brass, 30 μin [.76 μm] gold finish over nickel on entire contact
- Screw Machine Pin: Brass, 30 μin [.76 μm] gold finish over nickel on entire contact
- Screw Machine Socket: Brass body, Beryllium copper clip, 30 μin [.76 μm] gold finish over nickel, clip tin-lead over nickel body
- O-ring: Elastomer, Red
- Jam Nut: Material: Brass
Finish: Nickel plated
- Housing: Thermoplastic, Black

CABLE ASSEMBLIES

- Wide variety of custom discrete type cable assemblies, terminated with Terminals and Splices, Soft Shell, and Circular Plastic Connectors and other crimp and mass-terminated products.
- Capability to produce custom overmolded assemblies and insert and injection molding.
- Jacketed cable assemblies and discrete wire: Subminiature-D, SCSI, Circular Plastic, VHDCI, USB and Shielded Data Link
- For more information on our cable assembly capabilities, see our website at www.tycoelectronics.com/cables



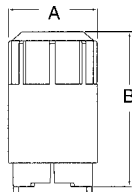
7 Position/M9.5

Contact Type	Cable Assembly Description	Part Number
Pin & Socket	Free-Hanging Receptacle	1692639-1
	Plug	1692638-1
Spring Probe	Free-Hanging Receptacle	1692637-1
	Plug	1692636-1

ACCESSORIES

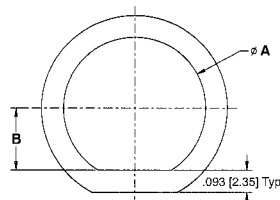
Strain Reliefs

Shell Size	Dimensions		Cable O.D. (Max.)	Part Number
	A	B		
M9.5	0.44 [11.3]	0.93 [23.6]	.20 [5.0]	1604111-1
M13.5	0.63 [16]	1.1 [27.9]	0.35 [8.8]	1604204-1



Flange Seals

Shell Size	Dimensions		Part Number
	A	B	
M9.5	0.43 [10.9]	0.18 [4.5]	1445420-3
M13.5	.60 [15.3]	0.26 [6.6]	1445420-1



Jam Nuts

Shell Size	Dimensions		Thread	Part Number
	A	B		
M9.5	0.55 [14]	0.095 [2.4]	7/16-28 UNEF-2B	1604197-1
M13.5	0.75 [19]	0.125 [3.2]	5/8-24 UNEF-2B	1604196-1

